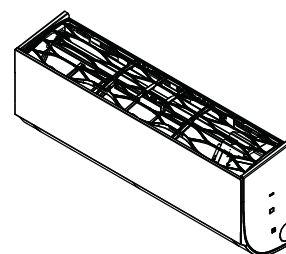
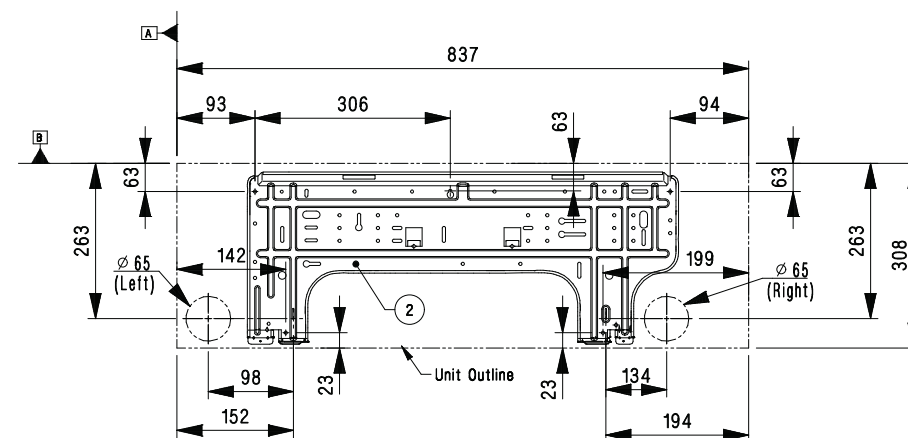
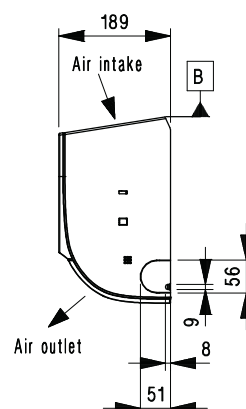


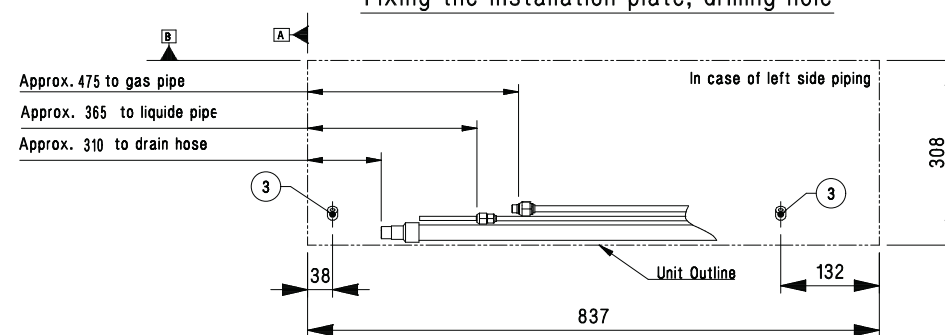
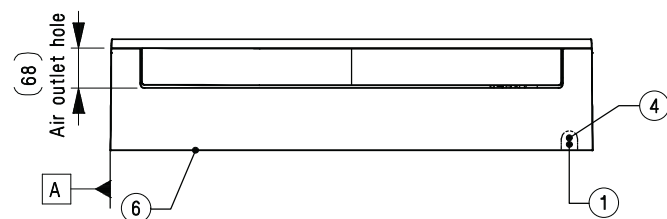
DWG No. : TBN35166201_Rev01





3D VIEW



Fixing the installation plate, drilling hole



Connecting gas/liquid pipe, drain hose

<div> <div>Symbols</div> <div>  Piping Direction  Datum line </div> </div>	<div> <div>Note</div> <div> 1. Unit should be installed in compliance with the installation manual in the product box. 2. Unit should be grounded in accordance with the local regulations or applicable national codes. 3. All electrical components and materials to be supplied from the site must comply with the local regulations or international codes. 4. Electrical characteristics chapter should be considered for electrical work and design. Especially the power cable and circuit breaker should be selected in accordance with that. </div> </div>	4	Terminal Block for Power Supply Communication	-
		3	Drain hose connection	-
		2	Installation Plate	-
		1	Refrigerant/Drain pipe and cable routing hole	Knock-out type
		No.	Part Name	Description