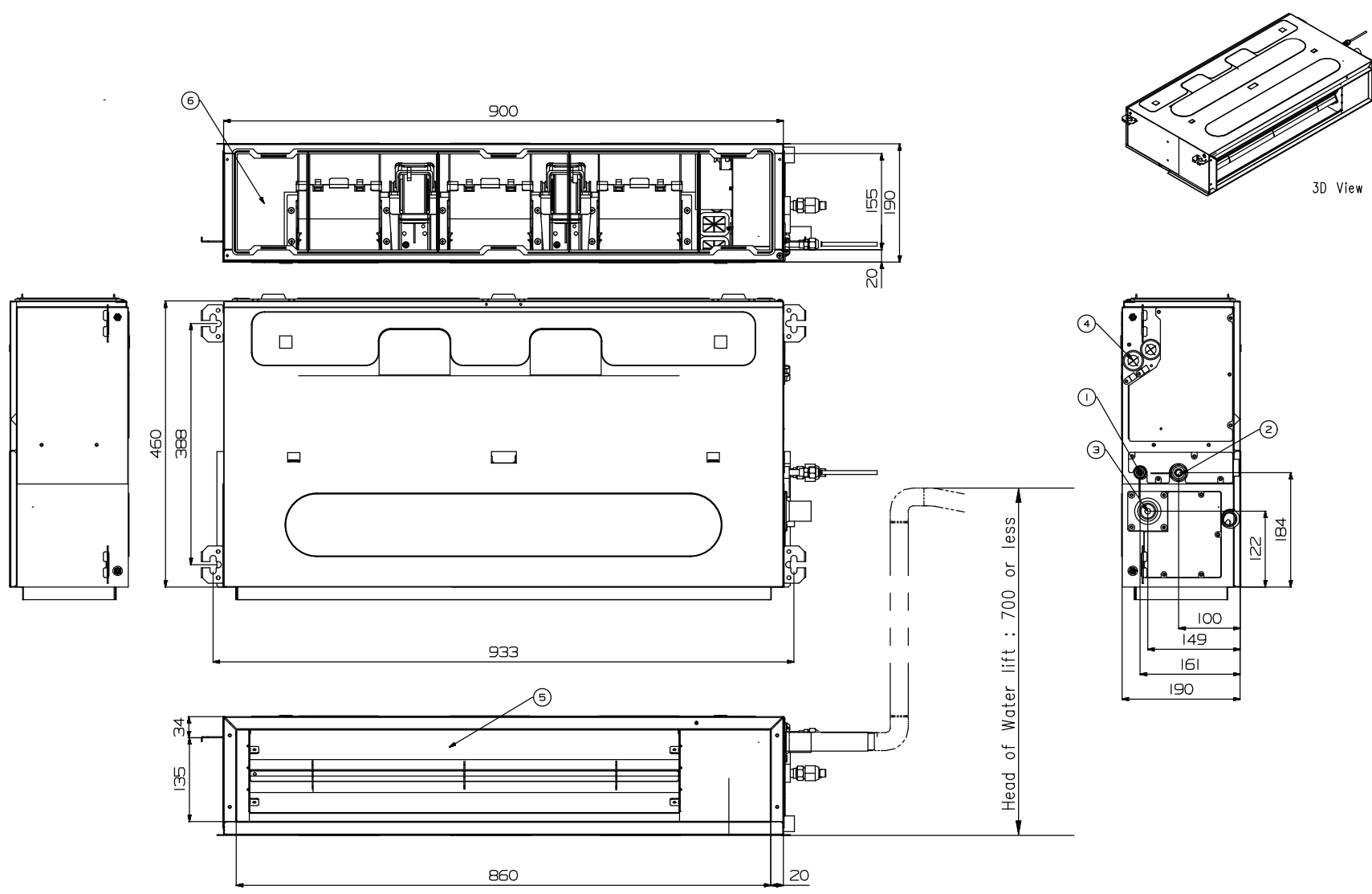


[Unit : mm]
Chassis : L5



Note

- 1. Unit should be installed in compliance with the installation manual in the product box.
- 2. Unit should be grounded in accordance with the local regulations or applicable national codes.
- 3. All electrical components and materials to be supplied from the site must comply with the local regulations or international codes.
- 4. Electric characteristics chapter should be considered for electrical work and design. Especially, the power cable and circuit breaker should be selected in accordance with that.

6	Air suction	—
5	Air discharge	—
4	Power supply connection	—
3	Drain pipe connection	—
2	Gas pipe connection	—
1	Liquide pipe connection	—
No.	Part name	Description