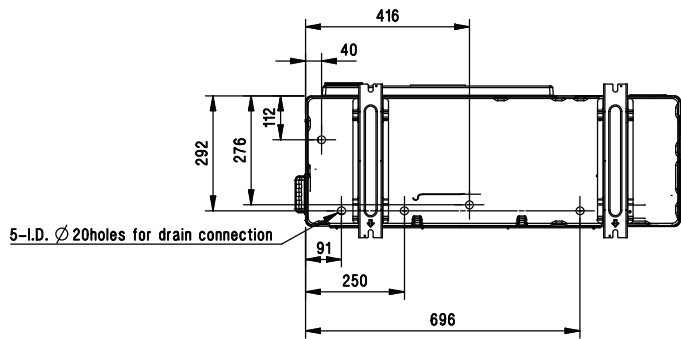
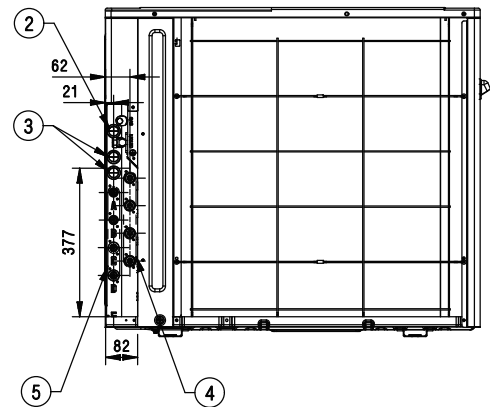
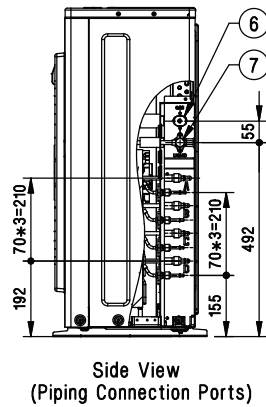
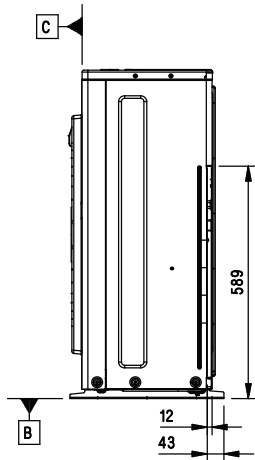
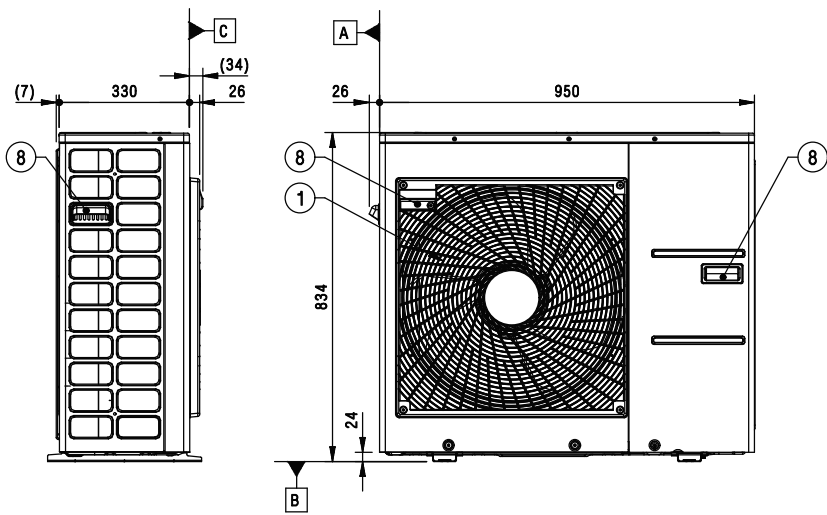


3D View



Symbols

- Piping Direction
▶ A Datum line

Note

- Unit should be installed in compliance with the installation manual in the product box.
- Unit should be grounded in accordance with the local regulations or applicable national codes.
- All electrical components and materials to be supplied from the site must comply with the local regulations or international codes.
- Electric characteristics chapter should be considered for electrical work and design. Especially the power cable and circuit breaker should be selected in accordance with that.

8	Handle	-
7	SVC Valve (Liquid)	-
6	SVC Valve (Gas)	-
5	Liquid Pipe Connection	Flare joint
4	Gas Pipe Connection	Flare joint
3	Power and communication cable Hole	ODU-IDU connection
2	Power Supply cable Hole	ODU power supply
1	Air Outlet	-
No.	Part Name	Description