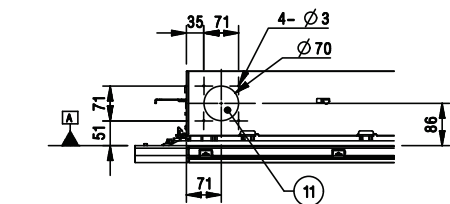
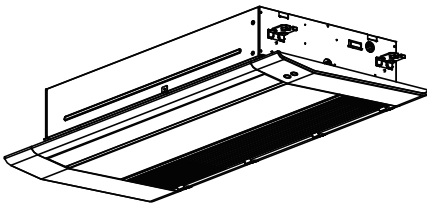
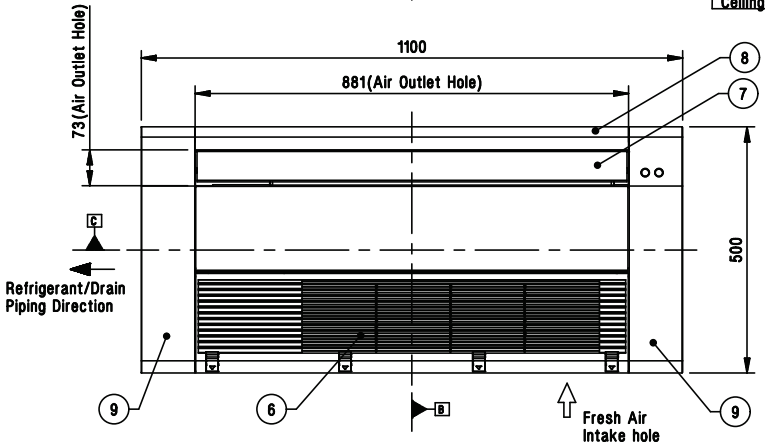
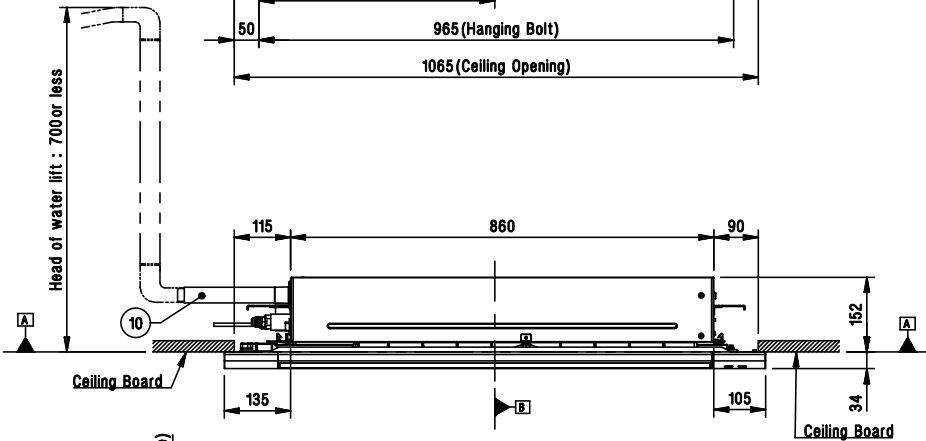
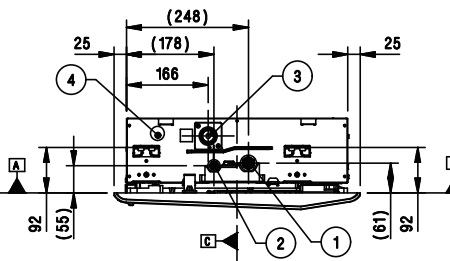


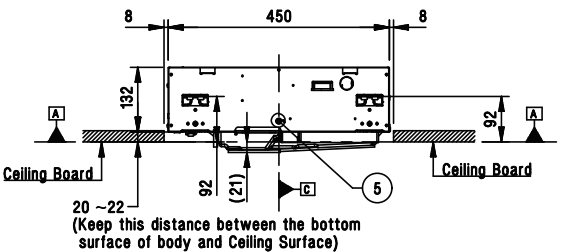
[Unit: mm]
Chassis code : TU
TBA35228801_Rev.02



View A
Fresh Air Intake hole



3D View



- Symbols**
- ➡ View Direction
 - Datum line
 - ➡ Refrigerant/Drain Piping Direction

Note

1. Unit should be installed in compliance with the installation manual in the product box.
2. Unit should be grounded in accordance with the local regulations or applicable national codes.
3. All electrical components and materials to be supplied from the site must comply with the local regulations or international codes.
4. Electric characteristics chapter should be considered for electrical work and design. Especially, the power cable and circuit breaker should be selected in accordance with that.

11	Fresh Air Intake Hole	Knock-out type
10	Flexible Drain Hose	Supplied with product
9	Decoration Side Cover	Supplied with panel
8	Decoration Panel(Accessory)	PT-UUC(1)
7	Air Outlet	-
6	Air Intake	-
5	Wired remote controller wire routing hole	-
4	Power and Communication cable routing hole	-
3	Drain Pipe Connection	-
2	Liquid Pipe Connection	-
1	Gas Pipe Connection	-
No.	Part Name	Description