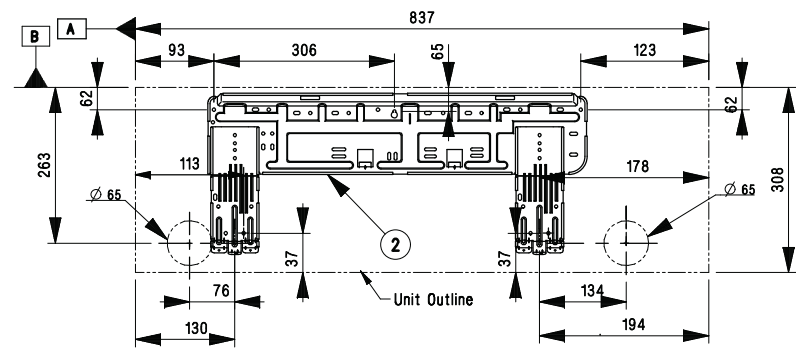
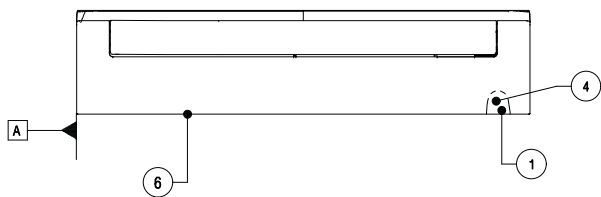
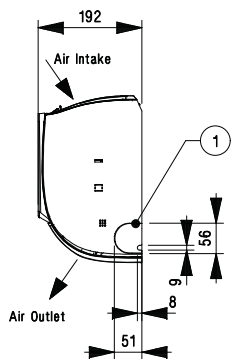
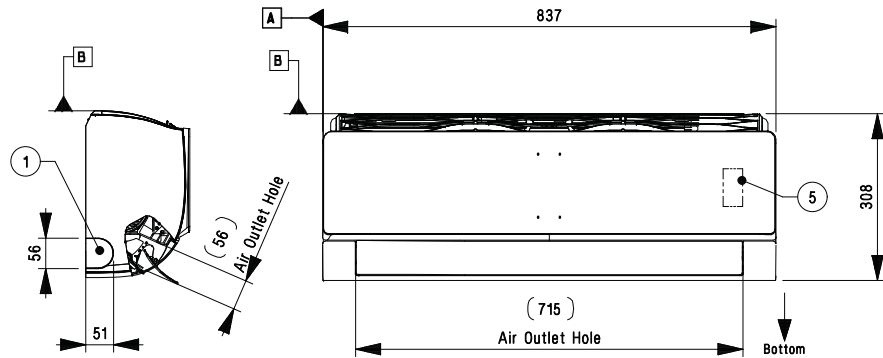
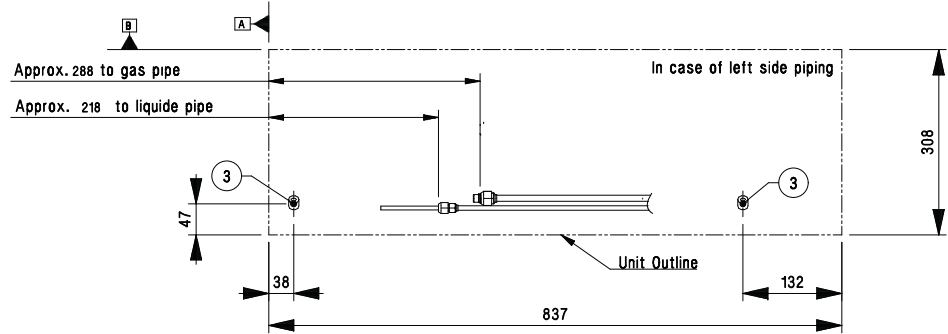


3D VIEW

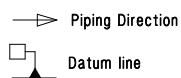


Fixing the installation plate, drilling hole



Connecting gas/liquid pipe

## Symbols



## Note

- Unit should be installed in compliance with the installation manual in the product box.
- Unit should be grounded in accordance with the local regulations or applicable national codes.
- All electrical components and materials to be supplied from the site must comply with the local regulations or international codes.
- Electric characteristics chapter should be considered for electrical work and design. Especially the power cable and circuit breaker should be selected in accordance with that.

6	Decoration Cover	-
5	Display & Remote Controller Signal Receiver	-
4	Terminal Block for Power Supply Communication	-
3	Drain hose connection	-
2	Installation Plate	-
1	Refrigerant, Drain pipe and cable routing hole	Knock-out type
No.	Part Name	Description